

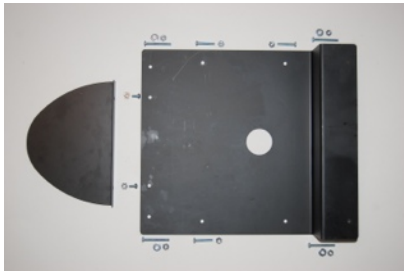
Hound Heater Bracket

Assembly Directions

STEP 1

Locate the parts for assembly.

- Nuts and bolts - located in the enclosed plastic bag.
- Heat Shield
- Hound Heater Bracket



STEP 2

Pull the power cord through the hole in the bracket. The cord will bend in a downward



STEP 3

Assemble the Hound Heater Furnace to the bracket with the three medium length bolts/nuts. The bottom of the bracket is the large angle part with the holes.

STEP 4

Assemble the Hound Heater deflector shield to the bracket with the two shortest bolts/nuts.



STEP 5

Drill four holes through the bracket's pre-drilled holes to attach to the house. Carefully slide the four longest bolts, washers and nuts through these holes and tighten



Full Assembly

This is what the finished product should look like.