

BEG Group LLC.

STANDARD OPERATING PROCEDURE

Subject: PBS Switch Chinking™ Installation Procedure

1. PURPOSE

The purpose of this procedure is to establish the details for installing PBS Switch Chinking and to ensure its proper fit, form and function according to the PBS Switch Chinking application detailed below in this procedure.

2. SCOPE

This procedure applies to anyone who is installing PBS Switch Chinking especially to those installers that have been Certified through the BEG Group's training program.

3. REFERENCES

- INST-00001-SP - BIG Switch™ Installation Procedure

4. DEFINITIONS

PBS Switch Chinking – Is a 100% Certified Cotton Bio-Degradable filter sock filled with a 100% Non-Toxic, Non-Invasive Plant Based Media to be used as chinking in place of wood chips, wood mulch and other materials that could leach into storm water runoff and that could contain arsenic, tannic acid, phosphates and other elements that could also contribute to increased turbidity in wetlands.

5. RESPONSIBILITIES

It is the responsibility of anyone installing PBS Switch Chinking products to follow this procedure including all applicable safety procedures.

6. PROCEDURE

6.1 Safety

- General (PPE)
At a minimum, it is suggested that you wear safety glasses, steel toe boots, long sleeve shirts, gloves, and long pants.
- Qualified Sub-Contract Installers
It is the qualified Installer's responsibility to follow, at a minimum, their own company's approved Safety Program and when required by the customer the installer must follow their safety program with no exceptions.

6.2 Loading and unloading PBS Switch Chinking Product

- When loading or unloading pallets or bags of PBS Switch Chinking on and off trucks and trailers you must ensure you are on a level surface. The product can easily shift, and it is difficult to re-palletize.

UNCONTROLLED WHEN PRINTED

BEG Group LLC.

- Store the product on a level surface and keep it protected from the weather, if possible, as the product gets heavier as it gets wet.

6.3 Preparing the Ground surface

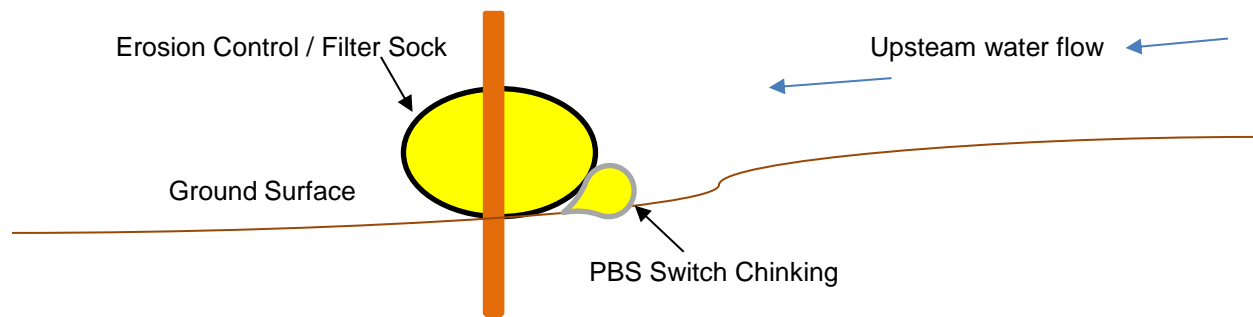
- Familiarize yourself with the area where the PBS Switch Chinking will be placed by conducting a site walk noting any conditions that require additional safety measures by completing a required Job Safety Analysis (JSA) and planning the method that will be required to ensure the proper ground preparation has been completed during the installation of the erosion control / filter main sock prior to the installing the PBS Switch Chinking.
- The area where PBS Switch Chinking products are to be installed must be cleared when installing the erosion control / filter main socks to ensure PBS Switch Chinking Product can make complete contact with the ground surface.
- Ground surfaces that are new construction must be free from pre-erosion crevasses or back filled to ensure complete contact with the PBS Switch Chinking Sock.

6.4 Pre- Installation

- Carefully move the appropriate size PBS Switch Chinking into the area to be installed.
- Remove any wrap, labels and banding and properly dispose of to eliminate any trip hazards ensuring no litter in the area.
- Verify that stakes are included with the PBS Switch Chinking or if they have been delivered separately.
- Verify that the wood stakes provided are 1" X 1" X 24"

6.5 Installation

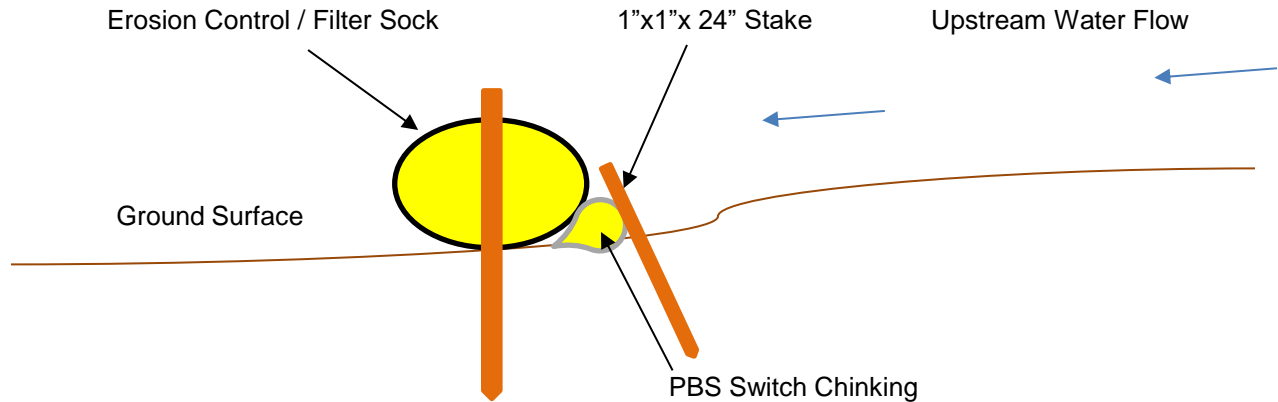
- Verify that the ground surface has been prepared for the installation.
- Place the PBS Switch Chinking on the ground surface on the upstream side of the erosion control / filter main sock and tuck it into the prepared area tight against the ground surface and erosion control / filter main sock. (see detail below).



- Verify that the sock has complete surface contact to the ground and Main Sock.
- Secure stakes against the upstream side of the PBS Switch Chinking approximately every 7' or closer to achieve contact with the Main sock and the ground. Do not stake through the sock except only when necessary to achieve contact with the ground surface and main sock.

UNCONTROLLED WHEN PRINTED

BEG Group LLC.



- Drive the 1" x 1 "x 24" stake into the ground at approximately 30 Deg. angle leaving approximately 3" above the top of the sock ensuring that the stake wedges the PBS Switch Chinking into the gap between the erosion control / filter main sock and the ground as show above.
- Ensure ground and erosion control / filter main sock contact and repeat this process for each section of PBS Switch Chinking.

6.6 Final Inspection

- Walk along the installed product and verify that the of PBS Switch Chinking has proper contact with the ground and erosion control / filter main Sock. If not acceptable stake the areas to achieve complete contact.
- Verify that all the stake's height is approximately 3" above the top of the sock and spacing is correct. If not acceptable: ensure corrections are made before moving to the next section.
- Note on the work order inspected by and initial.

7. ATTACHMENTS

- N/A

8. SAFETY RECORDS

- JSA

UNCONTROLLED WHEN PRINTED

